

PRINTING INSTRUCTIONS

INFORMATION FOR THE CORRECT CREATION OF A PRINT FILE FOR THE ADVERTISING PAGE OF THE MAGAZINE

ICON

The following guidelines are intended to show you the correct procedure for producing PDFs with the optimal characteristics for printing. IN ACCORDANCE WITH THE SPECIFICATIONS OF THE ISO 15930-6 STANDARD, WE RECOMMEND TO PROVIDE US WITH PDF FILES in versions 1.4 to 1.6 with the PDF/X-4 standard.

We ask that you adhere to standard quality requirements, such as an image resolution of 300 dpi, bleed margins, CMYK colour selections (not Pantone® or RGB for four-colour printing), and fonts that are either embedded or converted to outlines (vector fonts). The positioning of text (or any other elements deemed important to the message) within 10 mm of the registration marks. The use of small serif typefaces, thin borders, or very fine lines (of 0.3 mm or less in width), whether in positive (when printed in multiple colours) or negative (against coloured backgrounds). The use of borders, especially if thin and placed at the edge of the notice: in such cases, it is difficult to ensure equal spacing from the edges and/or continuity of these graphic elements between one page and another. The document created must strictly adhere to the bleed dimensions listed here + 5 mm of bleed on each side (see example on the last page) The provided material must be uploaded on our portal adv: <https://periodiciportal.gmde.it/ap/adportal>

PRINT FORMATS ICON

230x285 mm + 5 mm per side (Page)

460x285 mm + 5 mm per side (Double page)



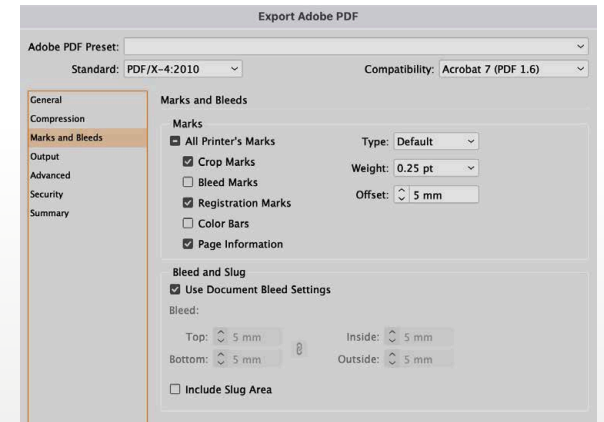
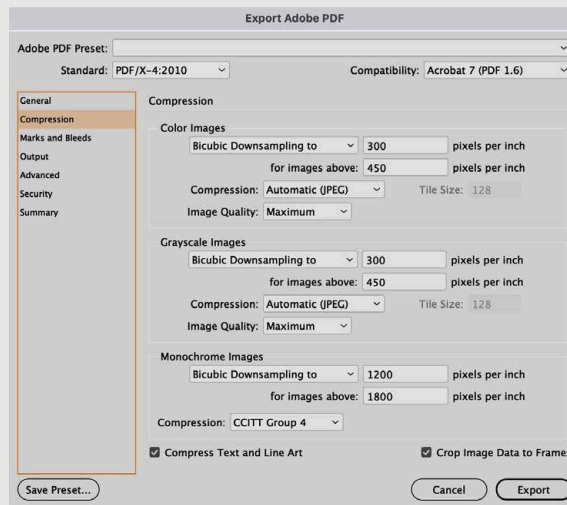
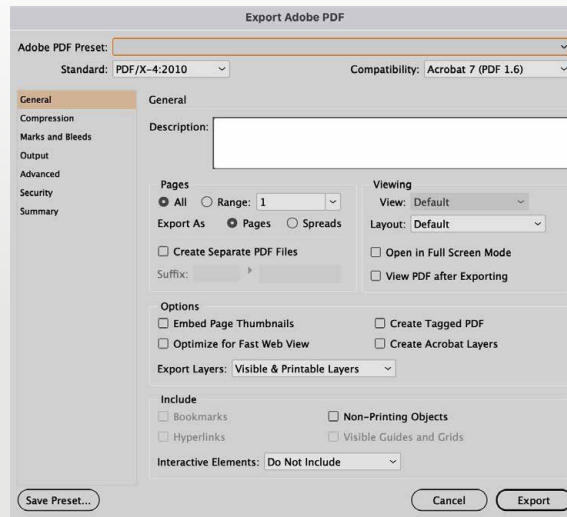
EXPORT TO PDF

Exporting or saving as a PDF from the graphics application you use:

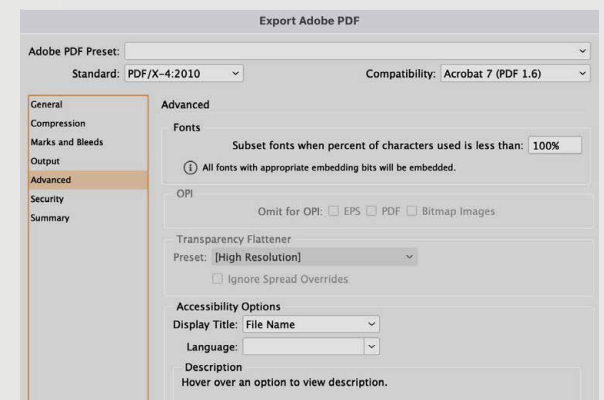
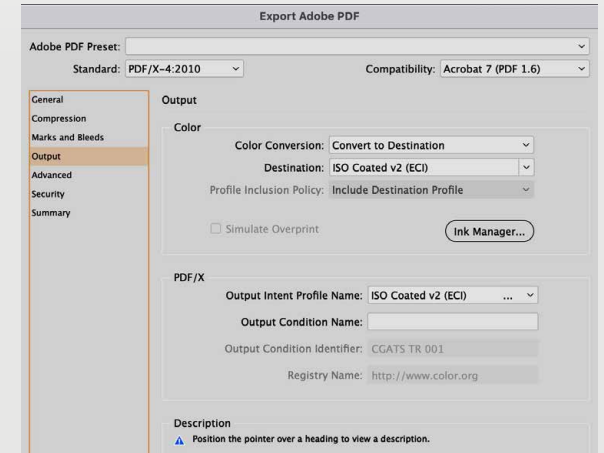
After selecting the option to export or save the graphic page as a PDF, follow the settings below. (Example below using Adobe InDesign versions from 2018 onwards)

Reference ICC profiles: ISOcoated_v2_eci.icc. If you do not have this, please request it.

If generating a PDF from a PostScript file, please request the Job Options



- Use the ISOcoated_v2_eci.icc ICC profile as the destination; this will convert the RGB objects. And never forget to click the ink management button and select the option to convert all spot colours to four-colour process.



- The 'High Resolution' transparency conversion preset delivers excellent results

PRINTING INSTRUCTIONS

GUIDELINES FOR CREATING A PRINT FILE WITH REGISTRATION MARKS AND BLANK MARGINS FOR MAGAZINE

ICON



Document Setup

Intent: **Print**

Number of Pages: **1** Facing Pages

Start Page #: **1** Primary Text Frame

Page Size: **[Custom]**

Width: **230 mm** Orientation:  

Height: **285 mm**

Margins

Top: **10 mm** Left: **10 mm**

Bottom: **10 mm** Right: **10 mm**

Bleed and Slug

	Top	Bottom	Left	Right
Bleed:	5 mm	5 mm	5 mm	5 mm
Slug:	0 mm	0 mm	0 mm	0 mm

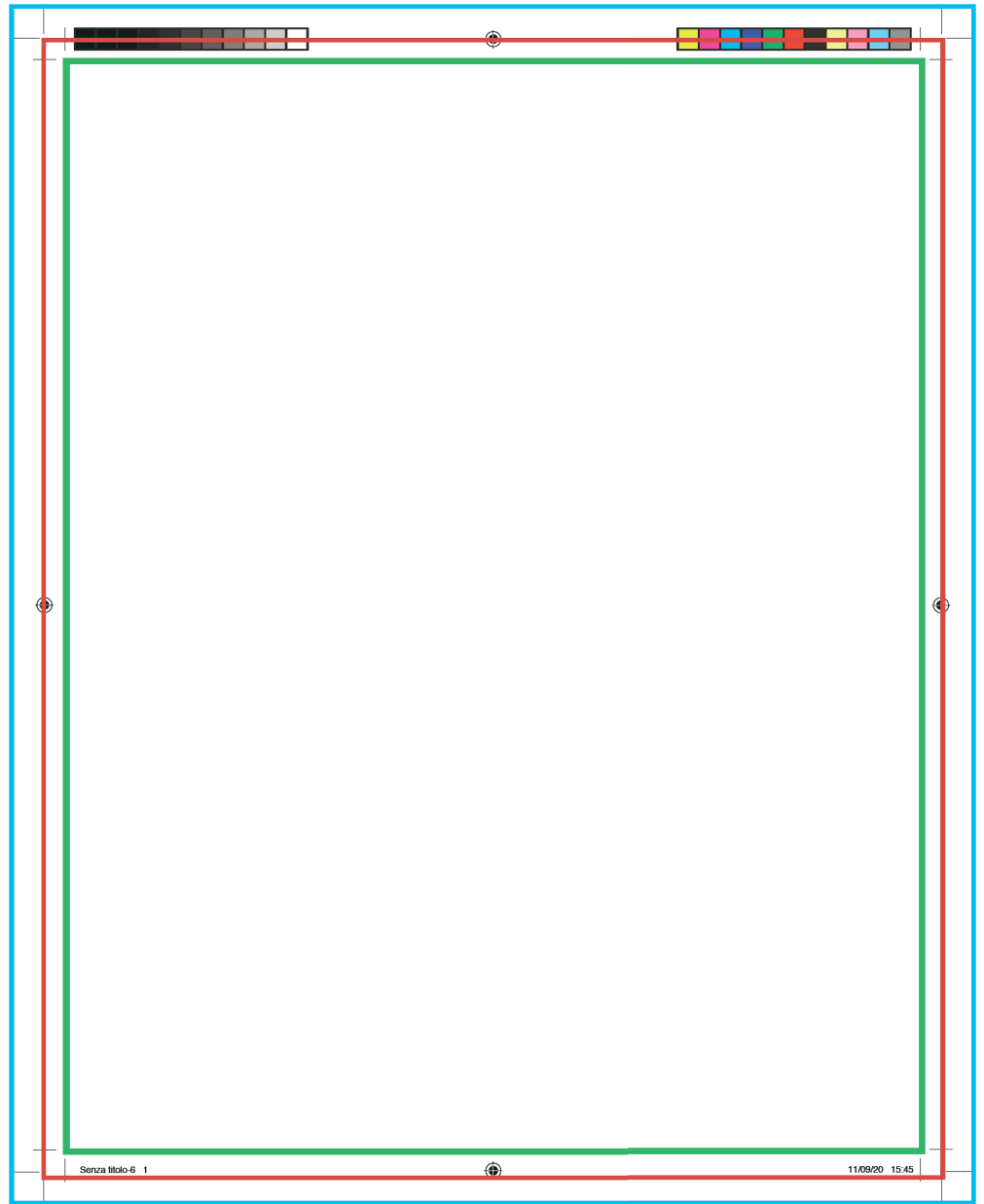
Adjust page elements to document changes **Adjust Layout...**

Preview **Cancel** **OK**

MEDIA BOX: defines the total size of the medium on which it will be printed and

BLEED BOX: defines the limits in which the page content is cut in production, but still includes the so-called "trim";

TRIM BOX: defines the final size of the page after the final cut; it is typically defined by crop marks; it is used by editing software (imposition).



- Page trimmed 230x285mm
- Page + 5 mm side (240x295mm) Total
- Total file size + 10mm bleed (250x305mm)

TRIM BOX

BLEED BOX

MEDIA BOX